

## GIUNTI MARINI - MARINE COUPLINGS



### GIUNTO PARASTRAPPI

**CODICE:** A400001

**Diametro disco:** 121,50 mm

**Centro fori:** 111,00 mm

**Numero fori:** 8

**Manicotto:** 10 denti – 23x29 DIN 5464

**Applicazioni:** ZF 5/6/10 M

Twin Disc TMC 40

**Coppia max:** 250 Nm

### DAMPER PLATE

**PART NO:** A400001

**Plate diameter:** 121,50 mm

**Bolt hole diameter:** 111,00 mm

**No. Holes:** 8

**Splined hub:** 10 teeth - 23X29 DIN 5464

**Applications:** ZF 5/6/10 M

Twin Disc TMC 40 –

**Max torque:** 250 Nm



### GIUNTO PARASTRAPPI

**CODICE:** A400035

**Diametro disco:** 121,50 mm

**Centro fori:** 111,00 mm

**Numero fori:** 8

**Manicotto:** 10 denti – 23X29 DIN 5464

**Applicazioni:** TMC 40 PAC Motore KOHLER FOCS

**Coppia max:** 250 Nm

### DAMPER PLATE

**PART NO:** A400035

**Plate diameter:** 121,50 mm

**Bolt hole diameter:** 111,00 mm

**No. Holes:** 8

**Splined hub:** 10 teeth – 23X29 DIN 5464

**Applications:** TMC 40 PAC Engine KOHLER FOCS

**Max torque:** 250 Nm



### GIUNTO PARASTRAPPI

**CODICE A400002**

**Diametro disco:** 151,50 mm  
**Centro fori:** 140,00 mm  
**Numero fori:** 8  
**Manicotto:** 10 denti – 23X29 DIN 5464  
**Applicazioni:** ZF 10/12/15 M  
Twin Disc TMC 40 – TMC 60  
**Coppia max:** 250 Nm

### DAMPER PLATE

**PART NO. A400002**

**Plate diameter:** 151,50 mm  
**Bolt hole diameter:** 140,00 mm  
**No. Holes:** 8  
**Splined hub:** 10 teeth – 23X29  
DIN 5464  
**Applications:** ZF 10/12/15 M  
Twin Disc TMC 40 – TMC 60  
**Max torque:** 250 Nm



### GIUNTO PARASTRAPPI

**CODICE A400009**

**Diametro disco:** 151,50 mm  
**Centro fori:** 140,00 mm  
**Numero fori:** 8  
**Manicotto:** 26 denti – SAE 20/40 DP  
**Applicazioni:** ZF 25 M, Twin Disc  
TMC 260  
**Coppia max:** 250 Nm

### DAMPER PLATE

**PART NO. A400009**

**Plate diameter:** 151,50 mm  
**Bolt hole diameter:** 140,00 mm  
**No. Holes:** 8  
**Splined hub:** 26 teeth – SAE 20/40  
DP  
**Applications:** ZF 25 M  
Twin Disc TMC 260  
**Max torque:** 250 Nm



### GIUNTO PARASTRAPPI

**CODICE A400020**

**Diametro disco:** 190,00 mm  
**Centro fori:** 170,00 mm  
**Numero fori:** 6  
**Manicotto:** 26 denti – SAE 20/40 DP  
**Applicazioni:** ZF 25 M  
Twin Disc TMC 260  
**Coppia max:** 250 Nm

### DAMPER PLATE

**PART NO. A400020**

**Plate diameter:** 190,00 mm  
**Bolt hole diameter:** 170,00 mm  
**No. Holes:** 6  
**Splined Hub:** 26 teeth – SAE  
20/40 DP  
**Applications:** ZF 25 M  
Twin Disc TMC 260  
**Max torque:** 250 Nm



### GIUNTO PARASTRAPPI

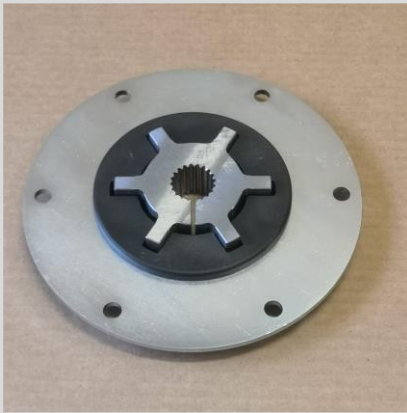
**CODICE A 400036**

**Diametro disco:** 242,00mm  
**Centro fori:** 222,20 mm  
**Numero fori:** 6  
**Manicotto:** 26 denti – SAE 20/40  
**Applicazioni:** ZF 25 M Twin Disc  
TMC 260 -  
**Coppia max:** 250 Nm

### DAMPER PLATE

**PART NO. A 400036**

**Plate diameter:** 242,00 mm  
**Bolt hole diameter:** 222,20 mm  
**No. Holes:** 6  
**Hub:** 26 teeth – SAE 20/40  
**Applications:** ZF 25 M  
Twin Disc TMC 260 –  
**Max torque:** 250 Nm



### GIUNTO PARASTRAPPI

**CODICE A400038**

**Diametro disco:** 170,00mm  
**Centro fori:** 150,00 mm  
**Numero fori:** 6  
**Manicotto:** 20 denti – mod. 1  
**Applicazioni:** KANZAKI KM2P-  
KM3P  
**Motore:** YANMAR 1GM – 2YM –  
3YM  
**Coppia max:** 250 Nm

### DAMPER PLATE

**PART NO. A400038**

**Plate diameter:** 170,00 mm  
**Bolt hole diameter:** 150,00 mm  
**No. Holes:** 6  
**Splined hub:** 20 teeth mod. 1  
**Applications:** KANZAKI KM2P1-  
KM3P,1GM – 2YM – 3YM  
YANMAR engine  
**Max torque:** 250 Nm



### GIUNTO PARASTRAPPI

**CODICE A420020**

**Diametro disco:** 215,90 mm –  
6,5”  
**Centro fori:** 200,00 mm  
**Numero fori:** 6  
**Manicotto:** 26 denti – SAE  
20/40 DP  
**Applicazioni:** Twin Disc TMC  
260/TM 345  
**Motore:** FNM  
**Coppia max:** 500 Nm

### DAMPER PLATE

**PART NO. A420020**

**Plate diameter:** 215,90 mm –  
6,5”  
**Bolt hole diameter:** 200,00 mm  
**No. Holes:** 6  
**Splined hub:** 26 teeth – SAE  
20/40 DP  
**Applications:** Twin Disc TMC  
260/TM 345  
FNM Engine  
**Max torque:** 500 Nm



### GIUNTO PARASTRAPPI

**CODICE A420021**

**Diametro disco:** 241,30 mm – 7,5”

**Centro fori:** 222,25 mm

**Numero fori:** 8

**Manicotto:** 26 denti

**Applicazioni:** Twin Disc TMC 260/TM 345, ZF 25

**Coppia max:** 500 Nm

### DAMPER PLATE

**PART NO. A420021**

**Plate diameter:** 241,30 mm – 7,5”

**Bolt hole diameter:** 222,25 mm

**No. Holes:** 8

**Splined hub:** 26 teeth

**Applications:** Twin Disc TMC 260/TM 345, ZF 25

**Max torque:** 500 Nm



### GIUNTO PARASTRAPPI

**CODICE A 420022**

**Diametro disco:** 263,52 mm – 8”

**Centro fori:** 244,48 mm

**Numero fori:** 6

**Mozzo:** 26 denti -SAE 20/40 DP

**Applicazioni:** Invertitori su motori VM serie HR

**Coppia max:** 600 Nm

### DAMPER PLATE

**PART NO. A 420022**

**Plate diameter:** 263,52 mm – 8”

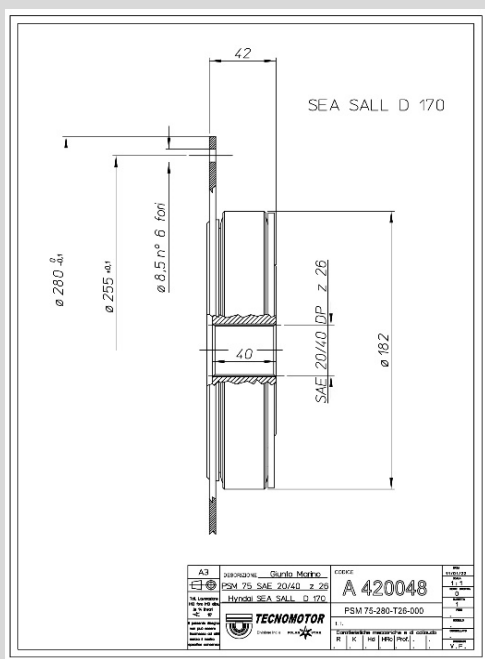
**Bolt hole diameter:** 244,48 mm

**No. Holes:** 6

**Hub:** 26 teeth – SAE 20/40 DP

**Applications:** Gearboxes on VM – HR engine

**Max torque:** 600 Nm



### GIUNTO PARASTRAPPI

**CODICE A 420048**

**Diametro disco:** 280,00 mm

**Centro fori:** 255,00 mm

**Numero fori:** 6

**Mozzo:** 26 denti – SAE 220/40 DO

**Applicazioni:** Invertitori ZF – TWIN DISC Motore HUNDAY SEASALL 170

**Coppia max:** 750 Nm

### DAMPER PLATE

**PART NO. A 420048**

**Plate diameter:** 280,00 mm

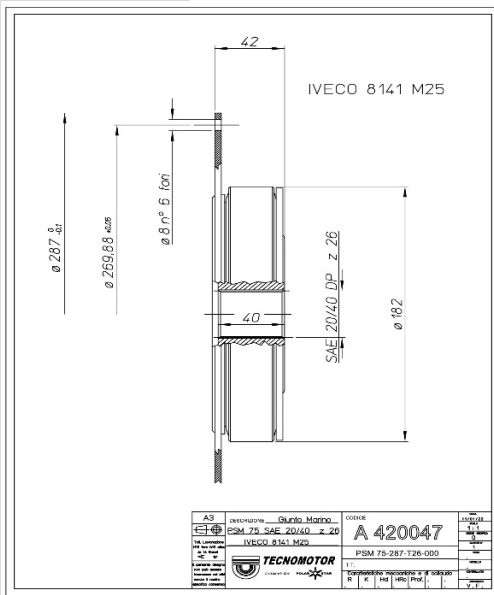
**Bolt hole diameter:** 255,00 mm

**No. Holes:** 6

**Hub:** 26 teeth – SAE 20/40 DP

**Applications:** ZF TWIN DISC Gearboxes HUNDAY SEASALL 170 engine

**Max torque:** 750 Nm



## GIUNTO PARASTRAPPI

**CODICE A 420047**

**Diametro disco:** 287,00 mm –

**Centro fori:** 269,88 mm

**Numero fori:** 8

**Mozzo:** 26 denti – SAE 20/40 DP

**Applicazioni:** Invertitori ZF – TWIN DISC

Motore AIFO IVECO 8141 M25

**Coppia max:** 750 Nm

## DAMPER PLATE

**PART NO. A 420047**

**Plate diameter:** 287,00 mm

**Bolt hole diameter:** 269,88

**No. Holes:** 8

**Hub:** 26 teeth – SAE 20/40

**Applications:** ZF TWIN DISC Gearboxes

AIFO IVECO 8141 engine M

**Max torque:** 750 Nm



## GIUNTO PARASTRAPPI

**CODICE A 420043**

**Diametro disco:** 276,00 mm

**Centro fori:** 250,00 mm

**Numero fori:** 6

**Mozzo:** 26 denti – SAE 20/40 DP

**Applicazioni:** Invertitori ZF-TWIN DISC su motori

YANMAR 3/4 JH

**Coppia max:** 750 Nm

## DAMPER PLATE

**PART NO. A 420043**

**Plate diameter:** 276,00 mm

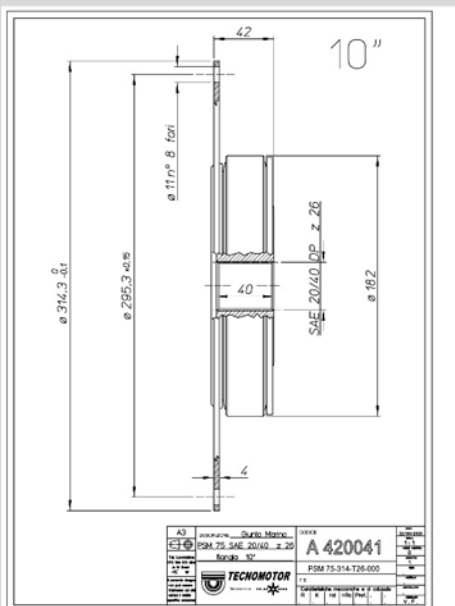
**Bolt hole diameter:** 250,00 mm

**No. Holes:** 6

**Hub:** 26 teeth – SAE 20/40 DP

**Applications:** Gearboxes ZF – TWIN DISC on YANMAR 3/4 JH engines

**Max torque:** 750 Nm



## GIUNTO PARASTRAPPI

**CODICE A 420041**

**Diametro disco:** 314,30 mm – 10"

**Centro fori:** 295,30 mm

**Numero fori:** 8

**Mozzo:** 26 denti – SAE 20/40 DP

**Applicazioni:** Invertitori ZF – TWIN DISC

**Coppia max:** 750 Nm

## DAMPER PLATE

**PART NO. A 420041**

**Plate diameter:** 314,30 mm – 10"

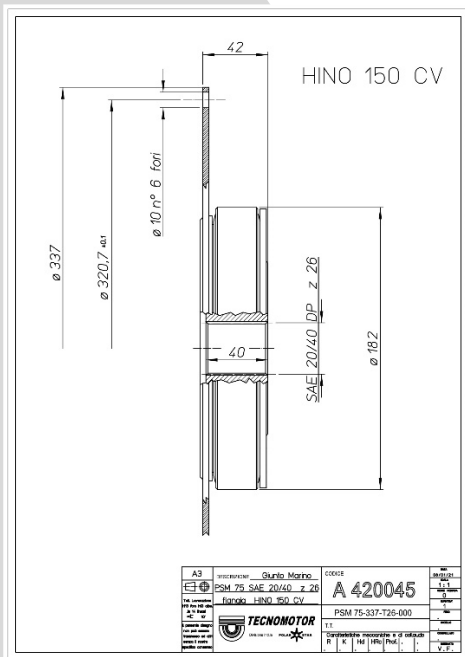
**Bolt hole diameter:** 295,30 mm

**No. Holes:** 8

**Hub:** 26 teeth – SAE 20/40 DP

**Applications:** ZF TWIN DISC Gearboxes

**Max torque:** 750 Nm



## GIUNTO PARASTRAPPI

**CODICE A 420045**

**Diametro disco:** 337,00 mm

**Centro fori:** 320,70 mm

**Numero fori:** 6

**Mozzo:** 26 denti – SAE 20/40 DP

**Applicazioni:** Invertitori ZF – TWIN DISC su motore HINO

**Coppia max:** 750 Nm

## DAMPER PLATE

**PART NO. A 420045**

**Plate diameter:** 337,00 mm

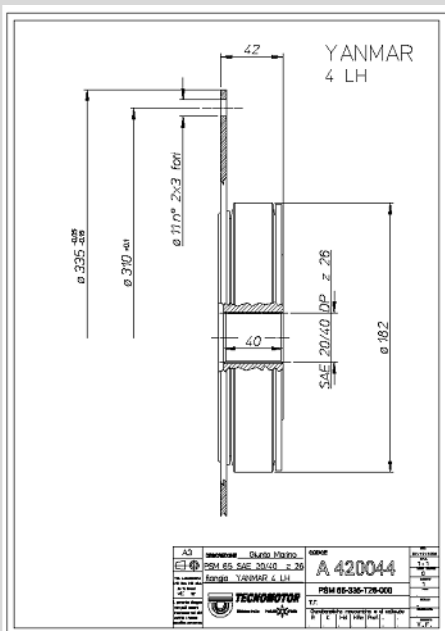
**Bolt hole diameter:** 320,70 mm

**No. Holes:** 6

**Hub:** 26 teeth – SAE 20/40 DP

**Applications:** ZF TWIN DISC Gearboxes on HINO engine

**Max torque:** 750 Nm



## GIUNTO PARASTRAPPI

**CODICE A 420044**

**Diametro disco:** 335,00 mm

**Centro fori:** 310,00 mm

**Numero fori:** 2X3

**Mozzo:** 26 denti – SAE 20/40 DP

**Applicazioni:** Invertitori ZF – TWIN DISC su motori YANMAR 4 LH

**Coppia max:** 750 Nm

## DAMPER PLATE

**PART NO. A 420044**

**Plate diameter:** 335,00 mm

**Bolt hole diameter:** 310,00 mm

**No. Holes:** 2X3

**Hub:** 26 teeth – SAE 20/40 DP

**Applications:** Gearboxes ZF – TWIN DISC on YANMAR 4 LH engines

**Max torque:** 750 Nm



#### GIUNTO PARASTRAPPI

**CODICE A 420042**

**Diametro disco:** 352,40mm – 11,5”

**Centro fori:** 295,30 mm

**Numero fori:** 8

**Mozzo:** 26 denti – SAE 20/40 DP

**Applicazioni:** Invertitori ZF – TWIN DISC

**Coppia max:** 750 Nm

#### DAMPER PLATE

**PART NO. A 420042**

**Plate diameter:** 352,40 mm – 11,5”

**Bolt hole diameter:** 295,30 mm

**No. Holes:** 8

**Hub:** 26 teeth – SAE 20/40 DP

**Applications:** ZF TWIN DISC Gearboxes

**Max torque:** 750 Nm



#### GIUNTO PARASTRAPPI

**CODICE A 420046**

**Diametro disco:** 300,00mm

**Centro fori:** 278,00 mm

**Numero fori:** 6

**Mozzo:** 26 denti – SAE 20/40 DP

**Applicazioni:** Invertitori ZF – TWIN DISC su motore HYUNDAI SEASALL

**Coppia max:** 750 Nm

#### DAMPER PLATE

**PART NO. A 420046**

**Plate diameter:** 300,00 mm

**Bolt hole diameter:** 278,00 mm

**No. Holes:** 6

**Hub:** 26 teeth – SAE 20/40 DP

**Applications :** ZF TWIN DISC Gearboxes on HYUNDAI SEASALL engine

**Max torque:** 750 Nm

TECNOMOTOR s.r.l.

Via B. Zallone, 17 - 40066 Pieve di Cento  
Area Metropolitana di Bologna - ITALY

Tel: +39 051.903715

CF e P.iva: 01107330381

Codice SDI: 7HE8RN5

Per informazioni :  
info@tecnomotorcento.it  
commerciale@tecnomotorcento.it